



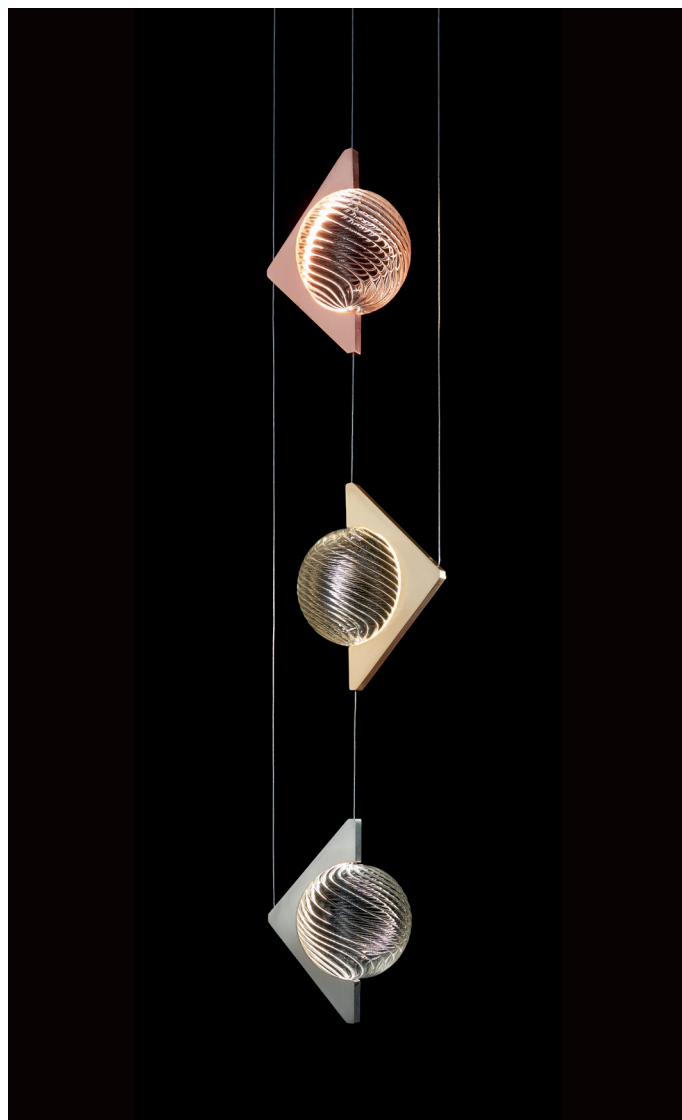
Specification description

Description

Suspension lamp
 Design Arch. Alessandro Mognato
 Year 2017
 Satin rose gold, satin brass or satin stainless steel metal structure.
 Clear lined handblown glass.

Lighting fixture description

Reference code	C17AL-0001-Do1Roo
Degree of protection IP/IK	IP20
Mounting type	Suspension lamp
Color / finish	Satin rose gold, satin brass or satin stainless steel metal structure. Clear lined handblown glass.
Switch	-
Flex color	-
Flex lenght	-
Physical dimensions	single module h.360 x w.200 x p.285 mm o.h. of triple module 2000 mm
Shade	-



Accessories needed for installation

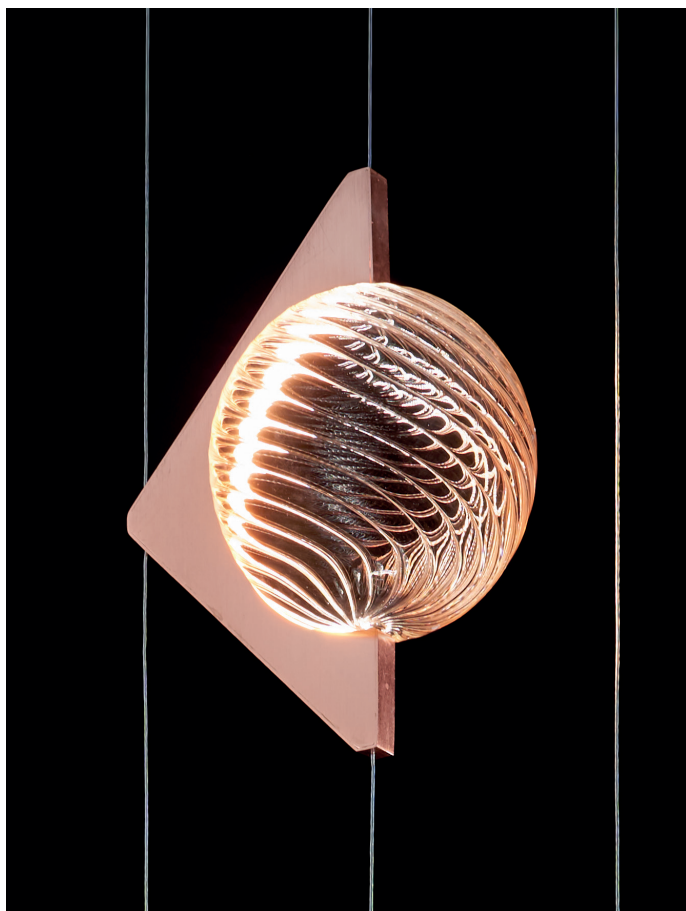
Plug -

Lamp	Control gear / Ballast / Transformer		
Manufacturer	-	Manufacturer	-
Reference	-	Type	-
Type	3 x LED	Reference	-
Voltage	24V - driver 220-240V	Voltage / frequency	-
Wattage	3 x 15W = 45W	Wattage	-
Lumen	3 x 1100lm = 3300lm	Dimming / addressable	DALI or 0-10V
Color Temperature (K)	3000°K (also available 2550°K, 4000°K, 6200°K or dynamic white)		
Lamp life	-		

Photometric data

Light distrib. curve / EULUMDAT -

Single module - options



Warm white and natural white

